



Sapporo, Hokkaido
July 28 – Aug 1
Apply at natsuproject.org

Natsu Camp '25 Info Session II

Experiential Learning • Cultural Exchange • Social Impact

Today's Speakers



Ria Oyama M.A.

Founder & Director
Stanford University
East Asian Studies



Caroline Cheng M.S.

Camp '25 Expert Mentor
Johns Hopkins Hospital
Data Science



KuoChuan Tseng

Youth Advisor
Waseda x Peking University
International Relations

Outline

- 01 What is Natsu Project?
- 02 Natsu Camp 2025 Overview
- 03 Sample Course Intro
- 04 Drop-In Q&A

My Background

- Penn State:
 - Major in **Criminology**
 - Minors in **Psychology** and **Sociology**
- Stanford (merit scholarship):
 - Master's in East Asian Studies
 - Specialization: **US-China-Japan trilateral relations**
 - Research experience at **Shorenstein Asia-Pacific Research Center (APARC)**
- **What I will be teaching: Social Entrepreneurship**
 - Core principles of building impactful social enterprises
 - Applying interdisciplinary insights to address societal challenges
 - Creating meaningful solutions through a global perspective

A social enterprise expanding access to global education
— from Japan, to the world.

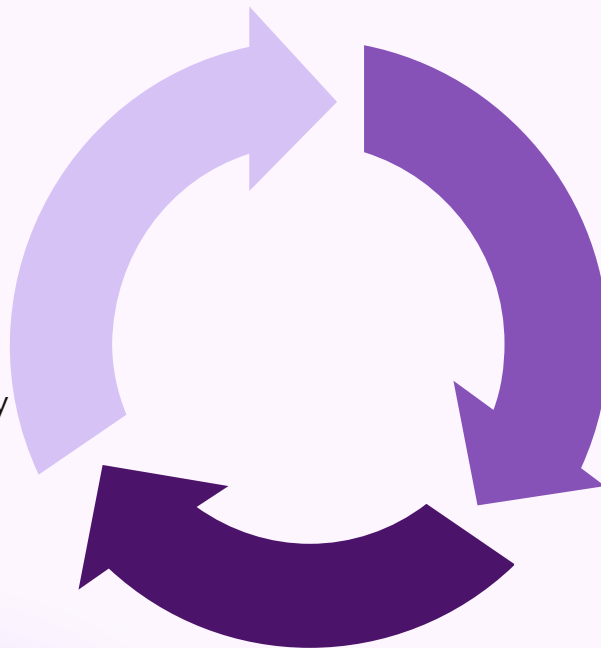
01

What is Natsu Project?

Our Sustainable Model for Growth and Access

Revenue

- World-class global programs
- Strategic partnerships (in progress)
- Sponsorships and philanthropy (in progress)



Investment

- Ensure financial self-sustainability
- Enhance program quality
- Develop new educational programs
- Grow scholarship funds

Outcome

- Transparent financial reporting
- World-class global education accessible to all
- A diverse, dynamic community for growth

- Founded in 2024 in Tokyo, Japan
- Mission: To expand global learning opportunities for motivated youth
- Social enterprise model: balancing excellence, sustainability, and access
- Diverse team of educators, professionals, and volunteers

What Makes Us Unique

- **World-class mentors** from UTokyo, Harvard, Stanford, Johns Hopkins, Deloitte, etc.
- English-immersion environment + **a truly global community**
- Experiential, project-based learning — **tangible deliverables**
- Need-based scholarships fostering a **diverse cohort that elevates the learning experience for all.**

Application Process



- **Step 1: Online Application**
 - Visit our website: www.natsuproject.org
 - Click "Ready to Apply?" to submit your application by **May 18**
 - For non-scholarship applicants: ~10 minutes
 - Scholarship applicants: ~1 hour
 - 2 short essay responses
 - Self-declared financial statement
 - Any supporting documents
 - Interview
- **Step 2: Acceptance Notification:** Successful applicants notified via email within 7 business days of applying
- **Step 3: Enrollment Confirmation**
 - Submit enrollment deposit
 - Upload an official photo ID
 - **Deadline: 14 calendar days from notification**
- **Step 4: Pre-Camp Preparation**
 - Detailed camp information shared with confirmed participants
 - Attend Welcome Session for Enrolled Students



A social enterprise expanding access to global education
— from Japan, to the world.

02

Natsu Camp '25 Overview

Camp '25 Team



Ria Oyama M.A.

Founder & Director
Stanford University
East Asian Studies



Hitoshi Kiyokawa M.S.

'25 Class Director
Keio University
Mechanical Engineering



KuoChuan Tseng "KC"

Youth Advisor
Waseda ✕ Peking University
International Relations, Law

Camp '25 Mentors



Prof. Xueji Zhang Ph.D.
 Guest Prof. at University of Tokyo
 Fellow of 4 Academies
 (US, Europe, UK, Russia)



Lauren Barnes M.A.
 Fulbright Fellow
 Stanford University



Shogo Takatsu
 Keyboardist of *Johnnivan*
 Waseda University



Sharon Shen M.A.
 United Nations
 Stanford University



Caroline Cheng M.S.
 Johns Hopkins Hospital
 Johns Hopkins University



Eric Senkit Suen Ph.D. i.p.
 Harvard University
 (Ph.D. In Progress)
 Mitsubishi Research Institute



Kohei Oyama M.S.
 Keio University
 Penn State University
 (Admitted to Aerospace Ph.D.)



Yifan Xu M.A.
 Deloitte Japan
 Stanford University

Camp '25 Courses



**The Future of Medicine:
AI, Biosensors, and the
New Frontiers**



**Sound, Story, and Self:
A Creative Journey
Through Music**



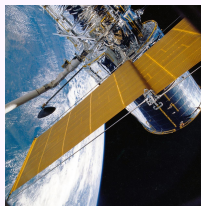
**Modern Japanese History:
Empire, Environment, and
Everyday Life**



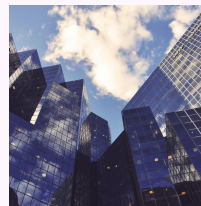
**Impact Lab:
Turning Ideas into Action
for a Better World**



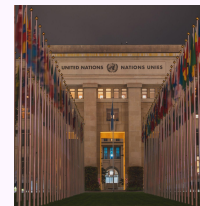
**Medical Data Science:
How Data Is Transforming
Healthcare**



**Beyond Earth:
Intro to Aerospace
Engineering**



**Make It Matter:
Business for Social Good**



**East Asia and the World:
Conflict, Cooperation,
and Geopolitics**

Hokkaido, Sapporo

Nestled in the northern island of **Hokkaido**, **Sapporo** is a vibrant, student-friendly city that beautifully blends **nature, culture, and innovation**. Famous for its **snowy winters**, you might be surprised to know that **summer in Sapporo is just as magical**—with cool breezes, lush landscapes, and an exciting lineup of festivals and outdoor adventures.



Capstone Project Highlights

■ **Hands-On Collaboration:**

Work in small groups guided by a United Nations mentor through our Impact Lab sessions.

■ **Field Exploration:**

Choose and visit relevant sites in Sapporo, accompanied by a mentor, to deepen your understanding of local issues.

■ **Real-World Impact:**

Identify a local challenge in Hokkaido that connects to global themes and create a meaningful proposal.

■ **Final Presentation:**

Showcase your team's project proposal on Day 5, integrating classroom learning with field insights. The winner proposal will be showcased on our official website.

Safety Priority

- **Experienced Mentors:** All activities supervised by trained and experienced mentors.
- **Small Group Structure:** Ensuring close supervision, personalized guidance, and accountability.
- **Local Knowledge:** Staff familiar with Hokkaido and Sapporo to navigate safely during field trips.
- **Emergency Protocols:** Clear, tested procedures in place for medical emergencies and other unexpected situations.
- **24/7 Support:** Dedicated security and medical staff available around the clock to assist students with any issues or concerns.
- **Comprehensive Orientation:** Pre-camp briefing to educate students on safety, expectations, and best practices during activities.
- **Regular Check-ins:** Daily meetings and continuous communication to monitor student well-being and address concerns promptly.
- **Inclusive Environment:** Commitment to providing an emotionally safe, respectful, and welcoming atmosphere for all participants.

Contingency Plan



For urgent medical support, Sapporo Medical University Hospital is located just 10 minutes on foot from the accommodation.

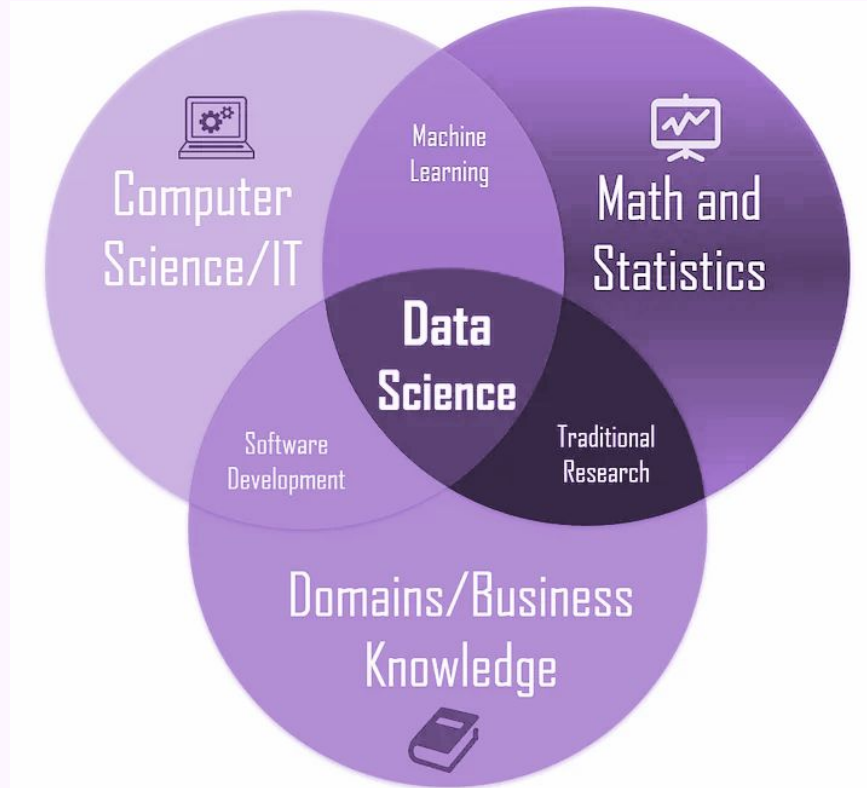
A social enterprise expanding access to global education
— from Japan to the world.

03

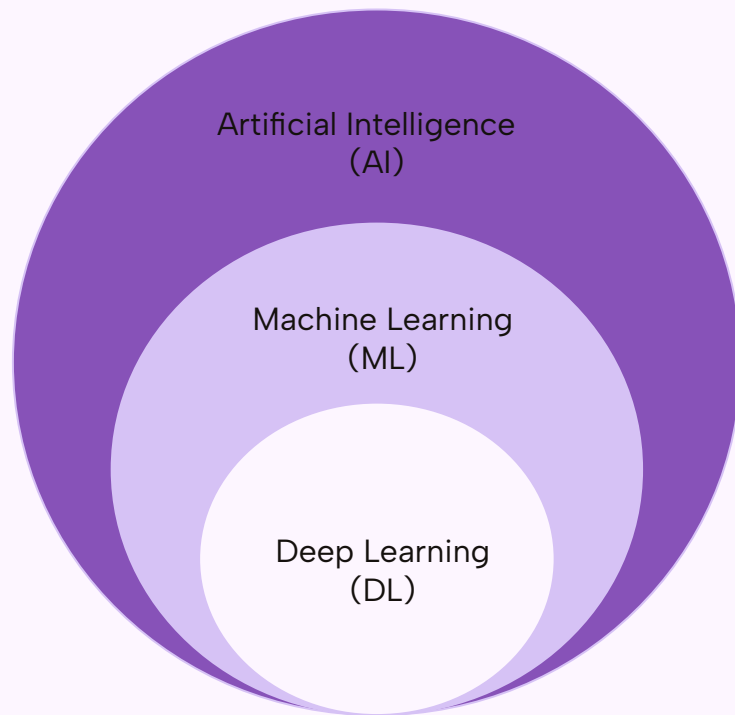
Sample Course Intro

*** No Prior Knowledge Required.

What is Data Science?



AI? Machine Learning?



AI? Machine Learning?

Attention Is All You Need

Ashish Vaswani*
Google Brain
avaswani@google.com

Noam Shazeer*
Google Brain
noam@google.com

Niki Parmar*
Google Research
nikip@google.com

Jakob Uszkoreit*
Google Research
usz@google.com

Llion Jones*
Google Research
llion@google.com

Aidan N. Gomez* †
University of Toronto
aidan@cs.toronto.edu

Lukasz Kaiser*
Google Brain
lukaszkaizer@google.com

Illia Polosukhin* †
illia.polosukhin@gmail.com

Abstract

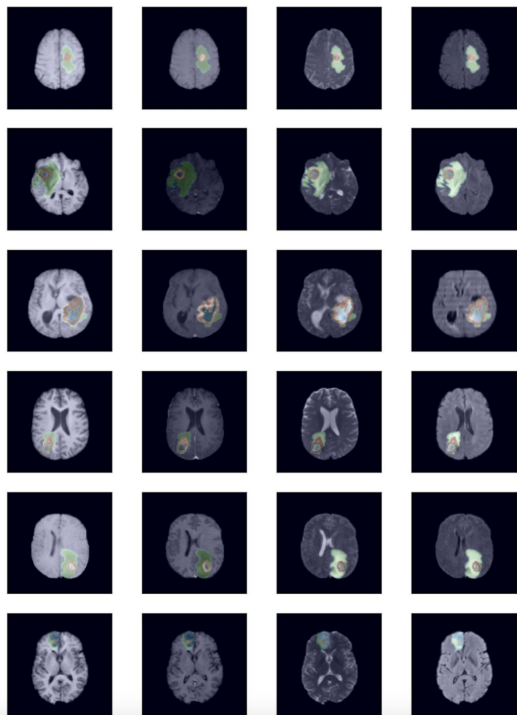
The dominant sequence transduction models are based on complex recurrent or convolutional neural networks that include an encoder and a decoder. The best performing models also connect the encoder and decoder through an attention mechanism. We propose a new simple network architecture, the Transformer, based solely on attention mechanisms, dispensing with recurrence and convolutions entirely. Experiments on two machine translation tasks show these models to be superior in quality while being more parallelizable and requiring significantly less time to train. Our model achieves 28.4 BLEU on the WMT 2014 English-to-German translation task, improving over the existing best results, including ensembles, by over 2 BLEU. On the WMT 2014 English-to-French translation task, our model establishes a new single-model state-of-the-art BLEU score of 41.0 after training for 3.5 days on eight GPUs, a small fraction of the training costs of the best models from the literature.



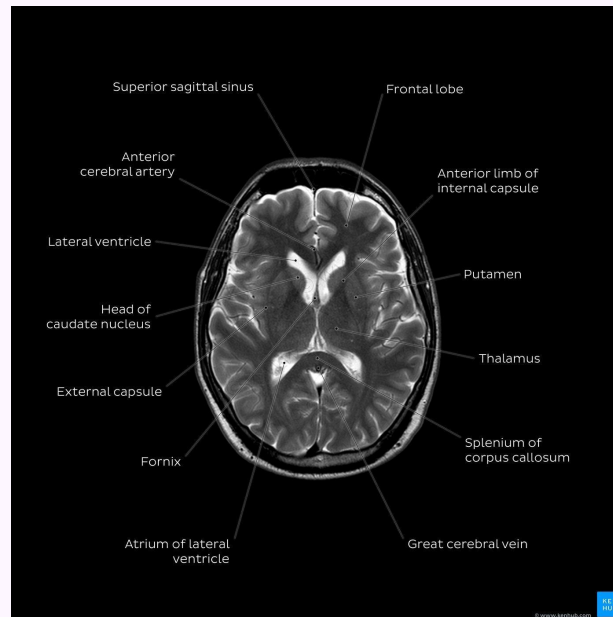
Natural Language Processing (NLP)

Computer Vision (CV)

Ways to improve healthcare...

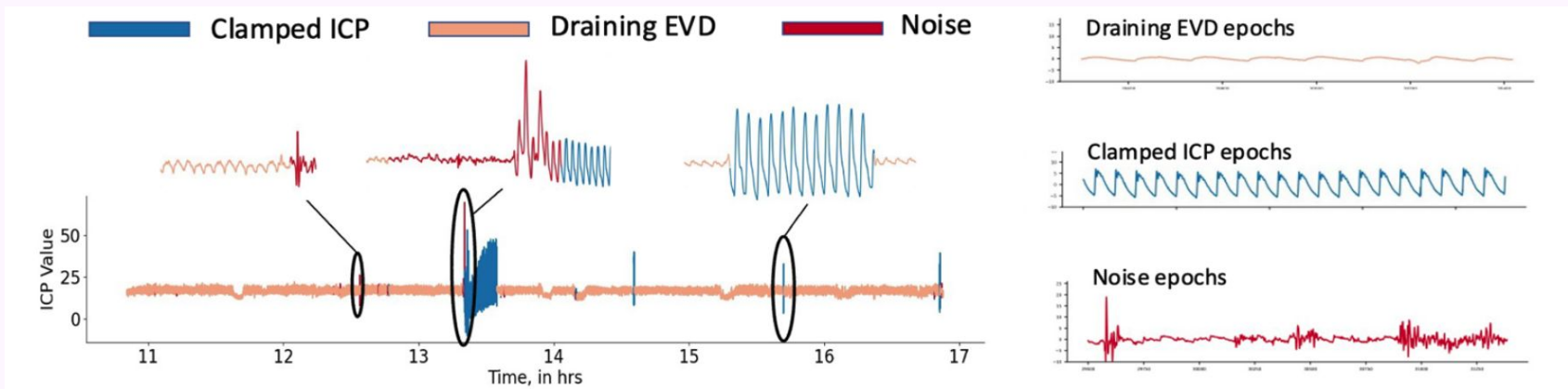
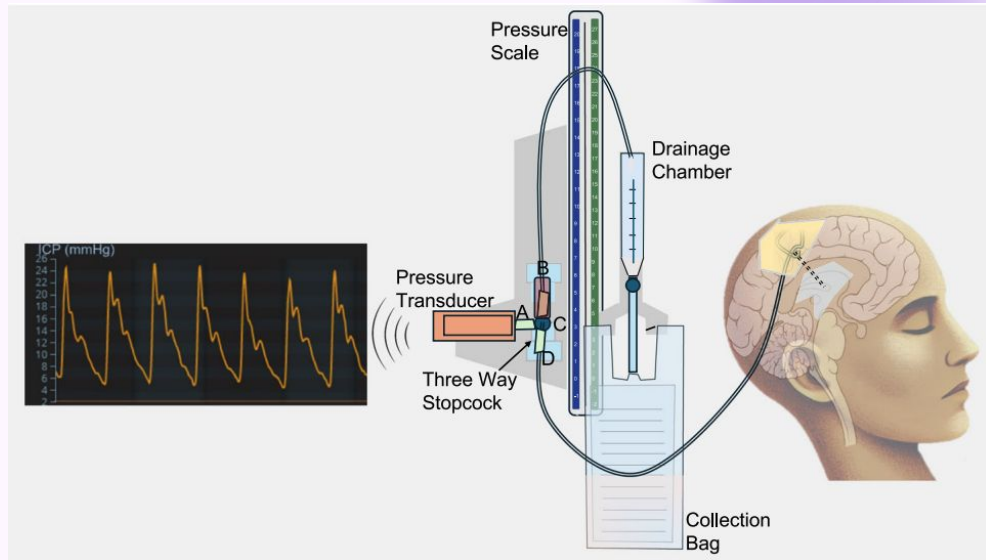


Segmentation results obtained from Swin UNETR [Hatamizadeh et al., 2022].



<https://www.nature.com/articles/s41746-025-01612-3>

- Lin (Caroline) Cheng



Why Data Ethics Matters

- **With great data comes great responsibility.**
- **Key questions we'll explore:**
 - **Should we collect this data?**
 - **How do we protect privacy?**
 - **Can AI be biased?**
 - **Misinformation or hallucination**
 - **How do we build technology that benefits everyone?**

Q&A

Additional questions?

info@natsuproject.org
+81 70-4087-9253
natsuproject.org



Follow us on Instagram
(**natsuproject_official**) for the
latest news and helpful tips!

To Apply:



Thanks!